

2000 Series

Built for **speed, accuracy and performance at an affordable price**, the robust 2000 series of hand-held digital thermometers provides a range of enhanced features to meet the changing demands of both **industrial and food environments**.

The rugged 2000 Series provides precise, **stable readings and high accuracy** even in the **harshest of environments**. They are **simple to operate, fast, reliable and built to last**. In this unique range we can offer advanced features such as dual input instruments which combined with interchangeable probe options makes this series a leader in its field. Optional coloured rubber boots add protection and style to these instruments.

General Specification

| | |
|---------------------------------------|--|
| Resolution: | 0.1° from -199.9°C to +199.9°C -199.9°F to +392.0°F 1°C elsewhere |
| Ambient Operating Temperature: | -10°C to +50°C/+14°F to +122°F (ambient) |
| Battery Type: | Two AA or equivalent cells (not supplied) |
| Battery Life: | Typically 500 hours |
| Low Battery Check: | Symbol appears on display |
| Display: | 12.7mm / 0.5" custom L.C.D. |
| Sensor Open Circuit: | Indicated by 'O-C' on display |
| Overrange/Underrange: | 'Out' displayed |
| Cold Junction Compensation: | Yes |
| Environmental Specifications: | IP65 (IP67 optional) |
| Auto Switch-Off Time: | 12 minutes |
| Dimensions: | 155 x 67 x 40mm/6.1 x 2.6 x 1.6" |
| Weight: | 180g/6.4oz |



2000T Model

For other options, please contact us digitronsales@rototherm.co.uk or +44 (0)1656 740551

Key Features and Benefits

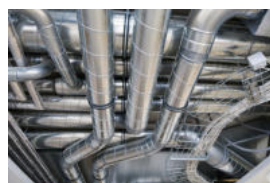
- Long battery life – typically 500 hours
- Accurate performance – 0.2% of reading
- Robust Case – Ensuring long life in demanding and harsh environments
- Selectable auto switch-off – saves on operational costs
- Automatic zero calibration – for added accuracy

Optional Extras

- 2000BT – Protective Rubber Sleeve
- Carry Case
- Various Probe Options
- Calibration Certificate

Main Applications

A **world leader** in digital thermometers, Rototherm has become the standard for accurate and reliable measurement across the following industries:



Industrial



Food & Beverage

Model Specification

| Model Options | 2000T <i>(Refer to IEC 60584)</i> | 2006T <i>(Refer to IEC 60584)</i> | 2024T <i>(Refer to IEC 751)</i> | 2029T <i>(Refer to IEC 60584)</i> |
|--------------------|--------------------------------------|--------------------------------------|------------------------------------|--------------------------------------|
| Sensor Type | K | T | Pt100 | K T J N R S |
| Connector Type | 2 pin mini | 2 pin mini | TCM screw | 2 pin mini |
| °C/°F Function* | | | • | • |
| Hold Function | • | • | • | • |
| Range Lock | | | • | • |
| Max/Min | | | • | • |
| Averaging | | | • | |
| Differential Input | | | | • |

| | | | | |
|---|----------------|--|------------------------|---|
| Instrument Accuracies (All ± 1 Digit) <i>(Excluding probe error)</i> | 2000T | 0.1% rdg $\pm 0.2^{\circ}\text{C}/0.4^{\circ}\text{F}$ above $-100^{\circ}\text{C}/-148^{\circ}\text{F}$ 0.5% rdg $\pm 0.2^{\circ}\text{C}/0.4^{\circ}\text{F}$ below $-100^{\circ}\text{C}/-148^{\circ}\text{F}$ | | |
| | 2006T | $\pm 0.2^{\circ}\text{C}/0.4^{\circ}\text{F}$ over range -20°C to $+70^{\circ}\text{C}/-4^{\circ}\text{F}$ to $+158^{\circ}\text{F}$ $\pm 0.1\%$ rdg $\pm 0.2^{\circ}\text{C}/0.4^{\circ}\text{F}$ elsewhere | | |
| | 2024T | $\pm 0.2\%$ rdg $\pm 0.1^{\circ}\text{C}/0.2^{\circ}\text{F}$ over range -150°C to $+600^{\circ}\text{C}/-238^{\circ}\text{F}$ to $+1112^{\circ}\text{F}$ | | |
| | 2029T | 0.1% rdg $\pm 0.2^{\circ}\text{C}/0.4^{\circ}\text{F}$ above $-100^{\circ}\text{C}/-148^{\circ}\text{F}$ 0.5% rdg $\pm 0.2^{\circ}\text{C}/0.4^{\circ}\text{F}$ below $-100^{\circ}\text{C}/-148^{\circ}\text{F}$ | | |
| Range | 2000T | -200°C to $+1350^{\circ}\text{C}/-328^{\circ}\text{F}$ to $+2462^{\circ}\text{F}$ | 2029T T | -200°C to $+350^{\circ}\text{C}/-328^{\circ}\text{F}$ to $+662^{\circ}\text{F}$ |
| | 2006T | -200°C to $+350^{\circ}\text{C}/-328^{\circ}\text{F}$ to $+662^{\circ}\text{F}$ | 2029T J | -200°C to $+350^{\circ}\text{C}/-328^{\circ}\text{F}$ to $+662^{\circ}\text{F}$ |
| | 2024T | -196°C to $+600^{\circ}\text{C}/-384.8^{\circ}\text{F}$ to $+1112^{\circ}\text{F}$ | 2029T N | -200°C to $+1300^{\circ}\text{C}/-328^{\circ}\text{F}$ to $+2372^{\circ}\text{F}$ |
| | 2029T K | -200°C to $+1350^{\circ}\text{C}/-328^{\circ}\text{F}$ to $+2462^{\circ}\text{F}$ | 2029T R & S | 0°C to $+1600^{\circ}\text{C}/+32^{\circ}\text{F}$ to 2912°F |

Technical Certification

- Certificate of Conformity
- Factory Test Certificate
- Factory Calibration Certificate

Export Documentation

- Certificate of Origin
- EUR1
- ATR

Calibration and After-Sales Support

- Fully trained field service personnel
- Use of UKAS certified calibration equipment
- 5 day turnaround
- Fixed pricing
- Approved manufacturer parts
- Full post-service reports
- 12 month warranty



ISO9001:2015
FM11958

